

# Motor Stator Testing System

## 6910/6913/6917 + 7605

### Feature

- One stop motor coil measurement solution, measuring items included inductance, AC/DC hipot, impulse winding, DCR (temperature compensation), polarity
- 4-wire DCR measurement
- The 691x impulse winding tester is the host instrument, all settings can be completed on the host
- Storage file up to 100 sets
- It can test multiple sets of DUTs simultaneously (depending on the number of winding set of the product)
- Arcing detection function
- The impulse winding tester with waveform comparison is a non-destructive analysis
- PC connection data analysis software is available

### Application

Motor, various stator and rotor coils



### Accessories / Fixtures

#### Standard

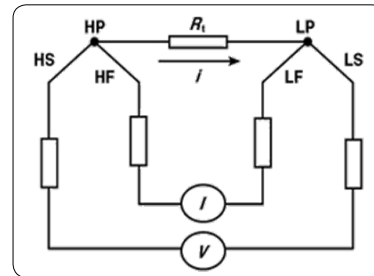
- Power Cord
- User Manual (Cd)
- Hv Test Cable
- Rca Temperature Test Probe
- RS-232 Cable
- 25F-25F
- D-Sub Foot Switch

#### Optional

- PC Link Software
- Customized Fixture
- Customized Rackmount
- LCR Meter 6365

### Key Features

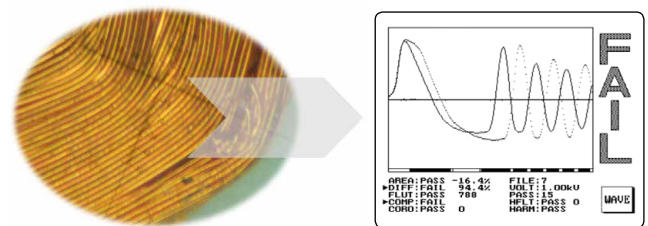
#### A 4-wire Measurement DCR



Motor stator coil

Unbalance DCR which happen on 3 phase motor may cause deflection on motor.

#### B Waveform Comparison



Impulse winding tester inspect by waveform comparison technology. Inspect quality by Damping Attenuation Waveform. The tester offer 200V~3000V impulse voltage to test the DUT. Compare the golden sample waveform.

#### C Stator Coil Testing Items

##### 6910/6913/6917 Impulse Winding Tester

- Total Area Comparison
- Area Differential
- Waveform Comparison
- Corona Comparison
- Flutter Comparison

##### 7605 Hipot Tester

- AC Hipot
- DC Hipot
- AC Leakage Current
- DC Leakage Current
- IR
- Arcing

##### 6365 (option) LCR Meter

- 4-Wire DCR
- Q
- Inductance

## Specification

Model Name		6910	6913	6917
DCR Range (with temperature compensation)		0.1mΩ-100kΩ		
DCR Accuracy		Low Resistance: 0.1mΩ-1Ω ±(0.2% ± 1mΩ), High Resistance: 1Ω-100KΩ ± 0.1%		
Model Name		-	6913L	-
DCR Range		0.1mΩ-150Ω		
DCR Accuracy		0.1mΩ-200mΩ ±(0.1% ± 0.5mΩ), 200mΩ-1Ω ±(0.1% ± 2mΩ), 1Ω-150Ω ± 0.5%		
Three-phase Resistance Balance Test		Comparison mode	<ol style="list-style-type: none"> <li>1. Absolute difference between two sets of coil resistance values</li> <li>2. The ratio of the absolute value of the difference between the two groups of coil resistance to the standard value</li> <li>3. The ratio of the absolute value of the difference between the resistance of two sets of coils to the average value of the measured resistance of three sets of coils</li> </ol>	
Measuring Mode		4-wire		
Channel		8	13	17
Hipot	AC Output Voltage	100V-5000V	100V-3000V	100V-3000V
	DC Output Voltage	100V-6000V	100V-3000V	100V-3000V
	IR Output Voltage	100V-1000Vdc		
	AC Leakage Current	0.001mA-10mA		
	DC Leakage Current	0.001mA-5mA		
	IR Lower Threshold	1-9999MΩ		
	Arcing Detection	Detect gears from 0-9		
	Measuring Time	0.1-99.9s Continuously adjustable		
	Measuring Time Accuracy	±(3% of setting+5V)		
Impulse Winding	Impulse Voltage (programmable)	200V-5000V	200V-3000V	
	Impulse Voltage Accuracy	± 2%		
	Test Items	Total area comparison, differential area comparison, wave comparison, futter and corona		
6365 LCR Meter (option)				
Test Frequency		10Hz-200kHz		
Inductance Measurement Ranges		0.1nH-100kH		
AC Drive Level		10mV to 2Vrms (1m Vrms resolution)		
Basic Accuracy		± 0.1%		
Frequency Output Accuracy		± 0.01%		
Three-phase Inductance Balance Test		Comparison Mode	<ol style="list-style-type: none"> <li>1. The absolute value of the difference between the two sets of coil inductance</li> <li>2. The ratio of the absolute value of the difference between the two sets of coil inductance to the standard value</li> <li>3. The ratio of the absolute value of the difference between the inductance of the two sets of coils and the average value of the measured resistance of the three sets of coils</li> </ol>	

## General

Test fixture	According to the test requirements
Indicator	Pass/Fail Screen Diaplay/Sound
Power Supply	Voltage 90-132Vac or 198-264Vac
Interface	RS-232
Built-in Storage	Storage of 100 rewritable data sets
Operation	Manual, RS-232
Environment	Temperature: 10°C-40°C, Humidity: 20-90%RH
Display	7.0" TFT, 800×480 color screen (6365), 320*240 5.7" dot-matrix display (6910/6913/6917), 480*272, 4.3" TFT LCD (7605)
Dimension (W*H*D)	435×145×522mm (6365), 435×190×522mm (6910/6913/6917), 435×145×522mm (7605)
Weight	9kg (6365), 15kg (6910/6913/6917), 14kg (7605)